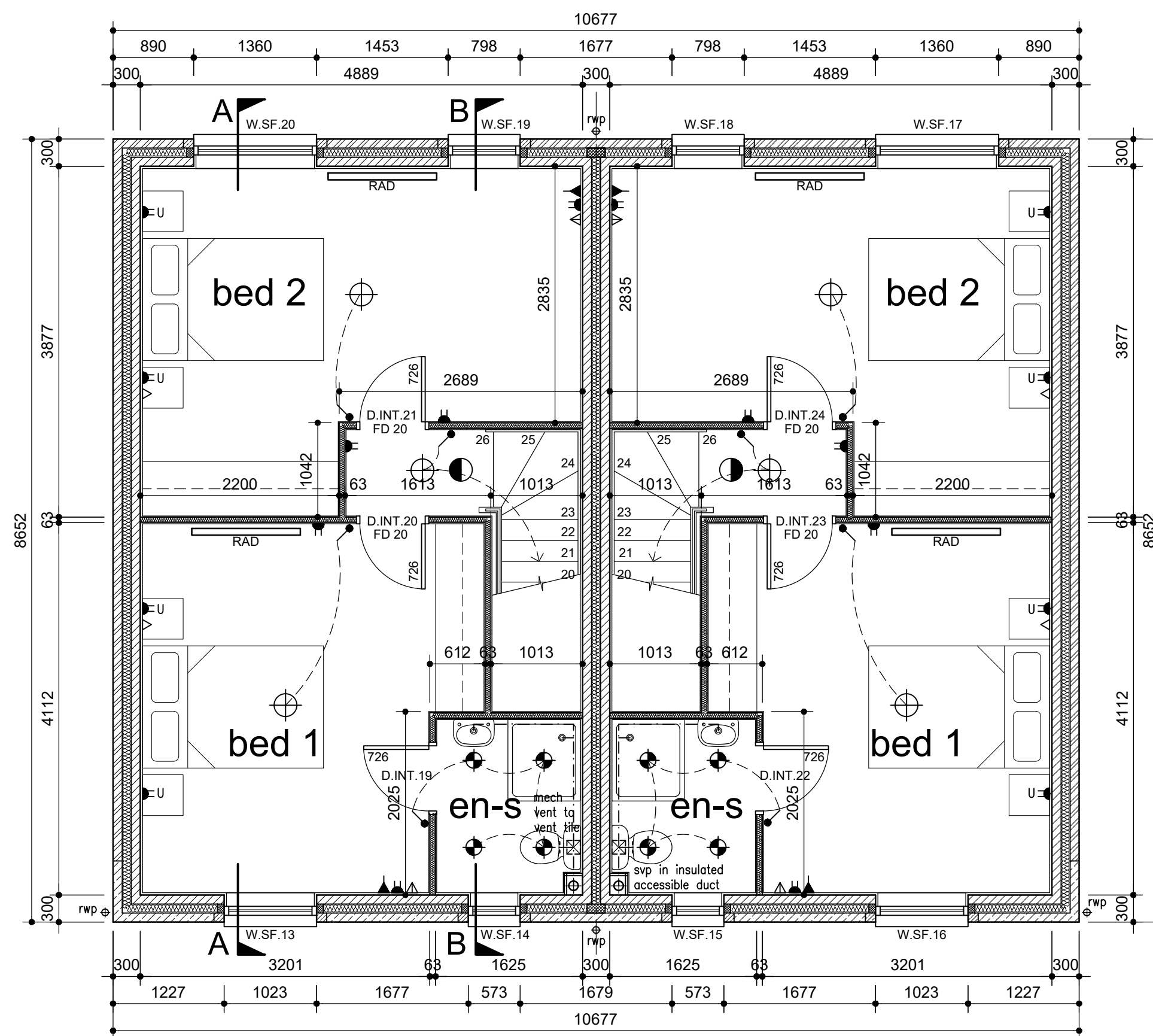
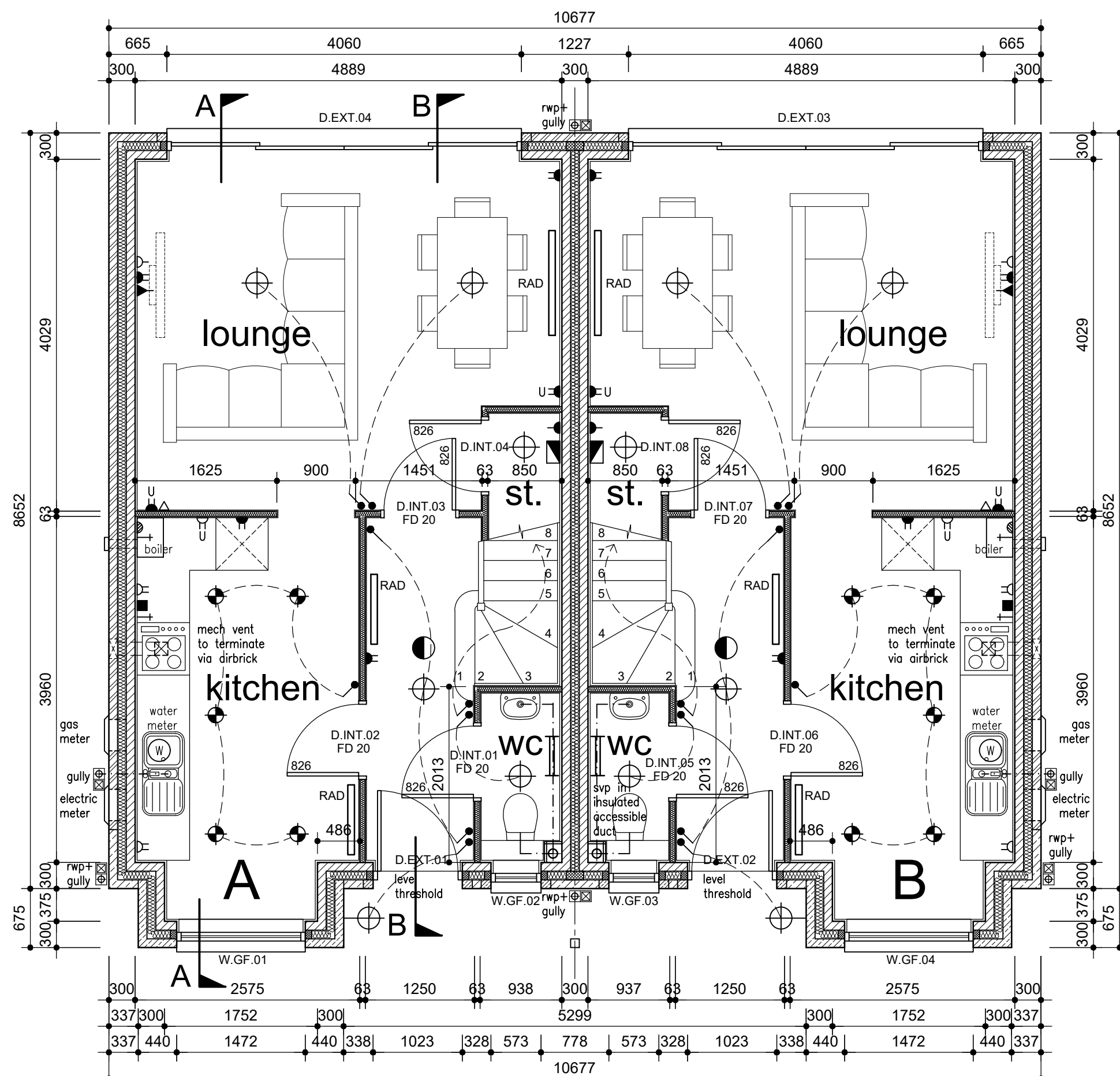


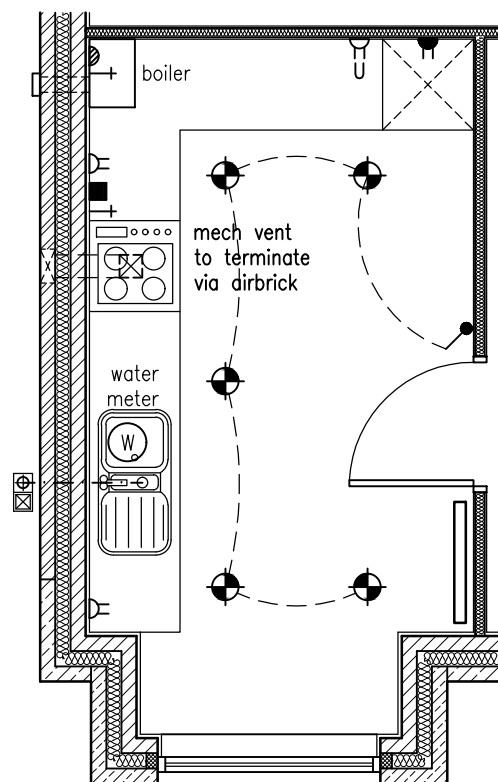
First Floor



Second Floor



Ground Floor



Alternative Kitchen Layout

DOOR SCHEDULE			
Reference	Location	Door Leaf	Notes
D.EXT.01	Type A Entrance		
D.EXT.02	Type B Entrance		
D.EXT.03	Type B Lounge	4060x2100	Sliding Door
D.EXT.04	Type A Lounge	4060x2100	Sliding Door
D.INT.01	Type A WC	826	FD20
D.INT.02	Type A Kitchen	826	FD20
D.INT.03	Type A Lounge	826	FD20
D.INT.04	Type A Store	826	FD20
D.INT.05	Type B WC	826	FD20
D.INT.06	Type B Kitchen	826	FD20
D.INT.07	Type B Lounge	826	FD20
D.INT.08	Type B Store	826	FD20
D.INT.09	Type A Bathroom	726	FD20
D.INT.10	Type A Bed 3	726	FD20
D.INT.11	Type A Store	726	FD20
D.INT.12	Type A Bed 4	726	FD20
D.INT.13	Type A Study	726	FD20
D.INT.14	Type B Bathroom	726	FD20
D.INT.15	Type B Bed 3	726	FD20
D.INT.16	Type B Store	726	FD20
D.INT.17	Type B Bed 4	726	FD20
D.INT.18	Type B Study	726	FD20
D.INT.19	Type A En-Suite	726	FD20
D.INT.20	Type A Bed 1	626	FD20
D.INT.21	Type A Bed 2	726	FD20
D.INT.22	Type B En-Suite	726	FD20
D.INT.23	Type B Bed 1	726	FD20
D.INT.24	Type B Bed 2	726	FD20

WINDOW SCHEDULE		
Reference	Size (WxH)	Notes
W.GF.01	1472x1650	
W.GF.02	573x1050	Obscure Glazing
W.GF.03	573x1050	Obscure Glazing
W.GF.04	1472x1650	
W.FF.05	1023x1650	
W.FF.06	1023x900	Obscure Glazing
W.FF.07	1023x900	Obscure Glazing
W.FF.08	1023x1650	
W.FF.09	1360x1200	
W.FF.10	798x1200	
W.FF.11	798x1200	
W.FF.12	1360x1200	
W.SF.13	1023x1950	
W.FF.14	573x900	Obscure Glazing
W.SF.15	573x900	Obscure Glazing
W.SF.16	1023x1950	
W.SF.17	1360x1200	
W.SF.18	798x1200	
W.SF.19	798x1200	
W.SF.20	1360x1200	

IMPORTANT

- © This drawing is copyright and remains the property of this practice
- Do not scale this drawing
- All dimensions to be checked on site
- Positions of existing services to be confirmed prior to proceeding

REVISION STATUS

S Information issued for feasibility or scheme design
T Information issued for tender purposes only
C Information issued for Construction
NB: Only those drawings containing a C revision to be used for construction

NOTES

Services Legend	
low level twin socket outlet	internal low energy light fitting
high level twin socket outlet	external low energy light fitting with PIR and daylight cut off sensor
fused spur outlet	downlighter
telephone socket	mechanical extract fan
TV aerial point	self contained interconnected mains operated smoke/heat detector with battery back up and wired to separate fused circuit at distribution board
cooker control unit	heater position - refer to specialist details
gas point	heated towel rail
consumer unit	low level twin socket outlet with USB
light switch	
2-way light switch	
Switches and socket outlets for lighting and other equipment in habitable rooms to be at heights between 450mm and 1200mm from finished floor level	
CAT5e data point	

CLIENT
AURUM_HOMES_LTD

PROJECT
BRADFORD ROAD_BAILIFF BRIDGE
BRIGHOUSE

DRAWING TITLE
FLOOR PLANS
HOUSE_TYPE_2_SEMI_DETACHED

SCALE
1:50 @_A1

DATE
JULY_2019

DRAWN
PWL

CHECKED
PWL

DRG NO.
EAD_047_WD_08

REVISION

Evolve Architectural Design Ltd
2 St Matthews School House
Stanhill Lane
Oswaldtwistle
Accrington
Lancashire BB5 4PZ
T 01254 469702
M 07957 592102
E paul@evolvead.co.uk
www.evolvead.co.uk

Evolve
Architectural Design