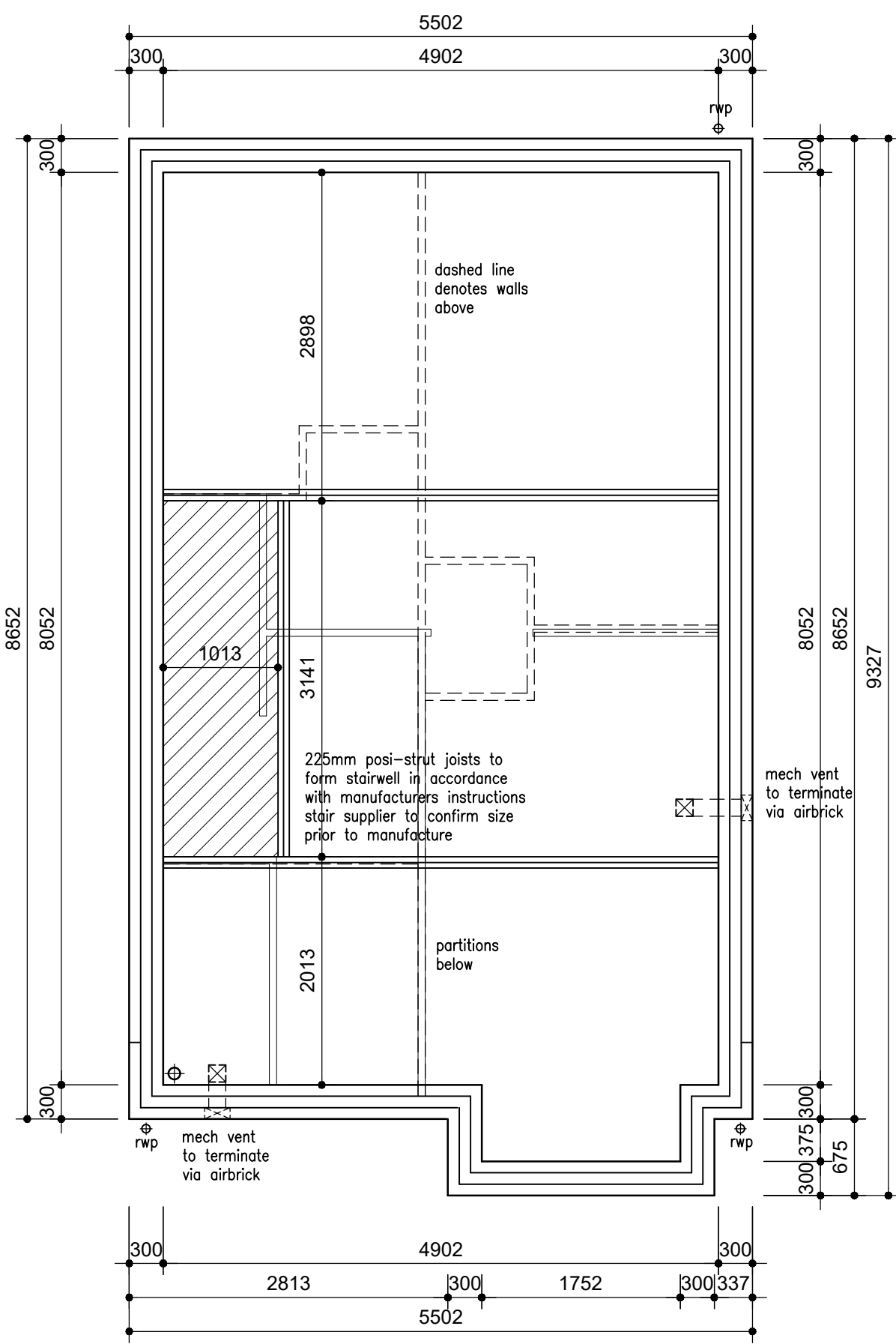
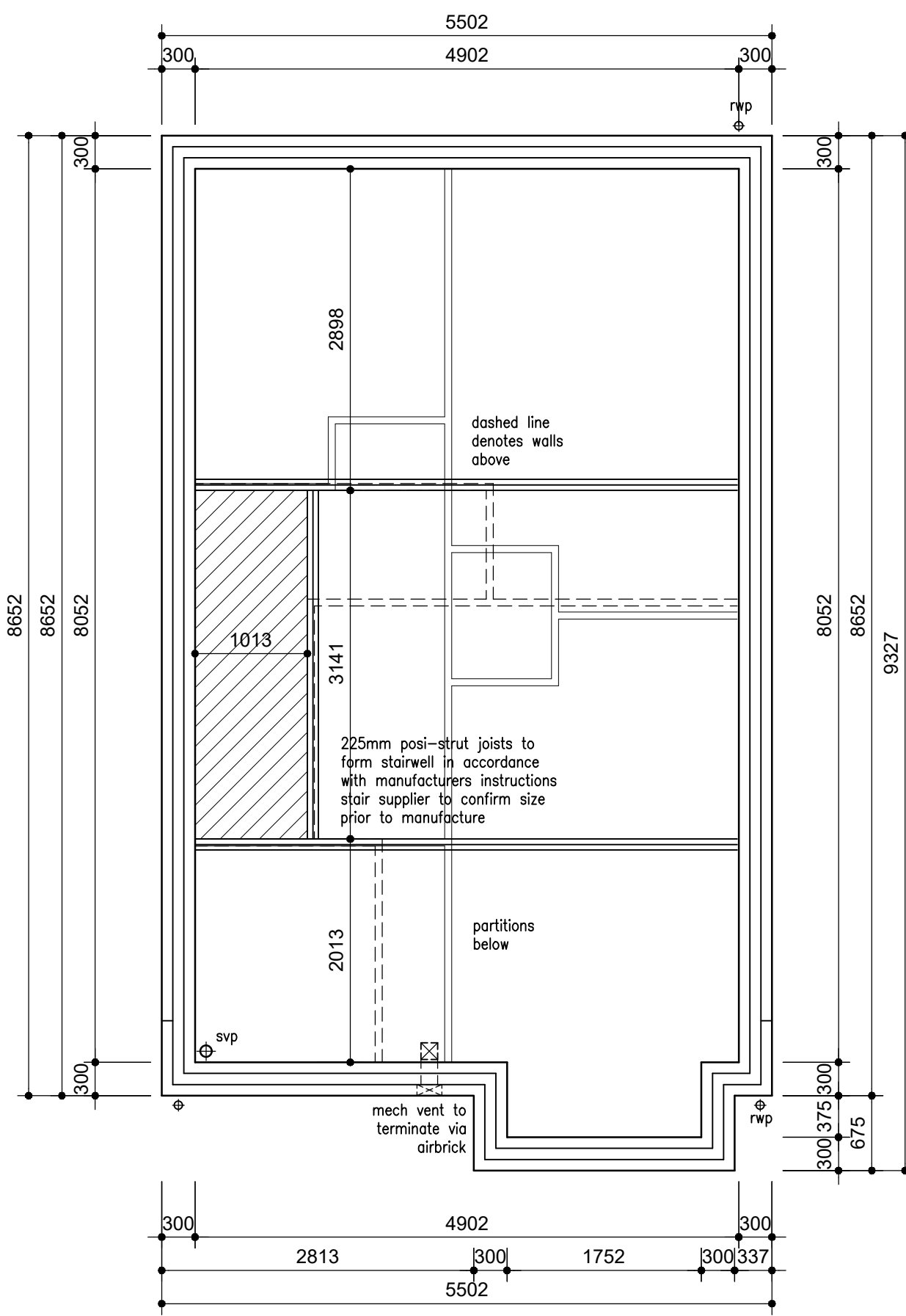


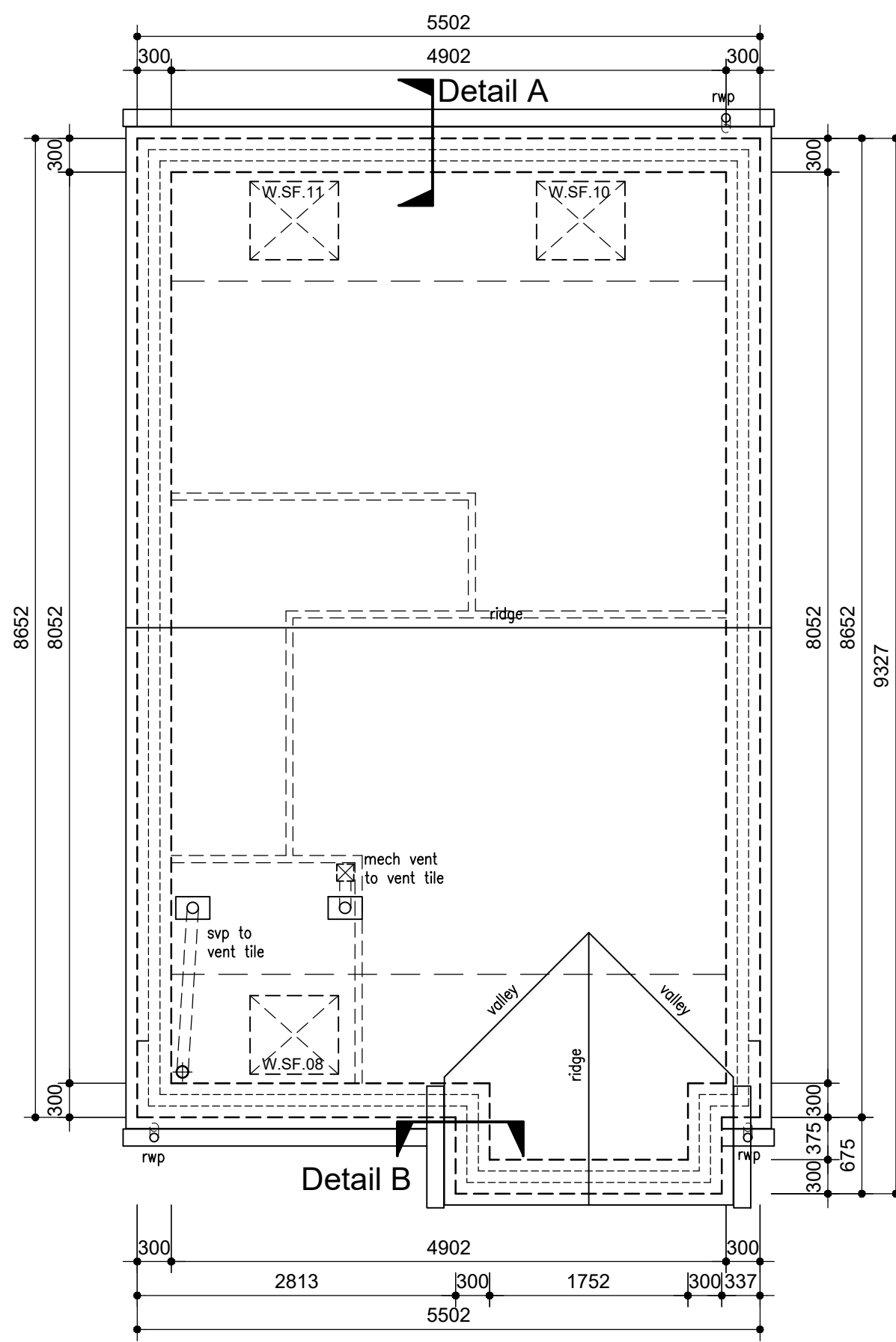
Setting Out Plan



First Floor Joist



Second Floor Joist

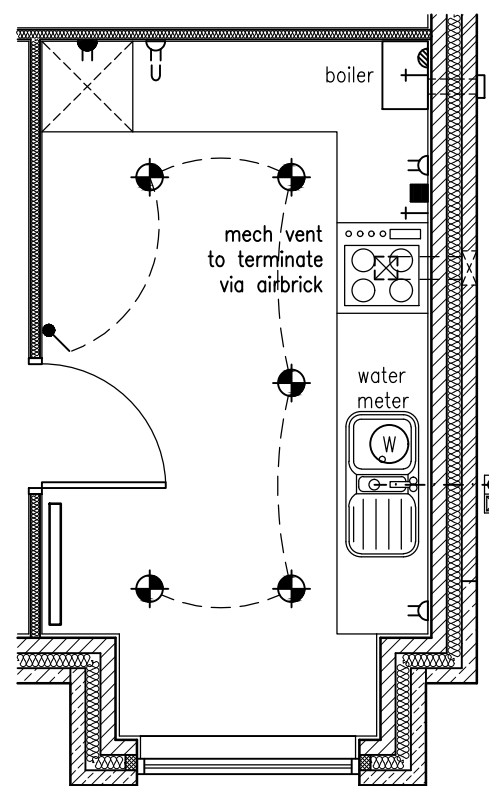


Roof Layout

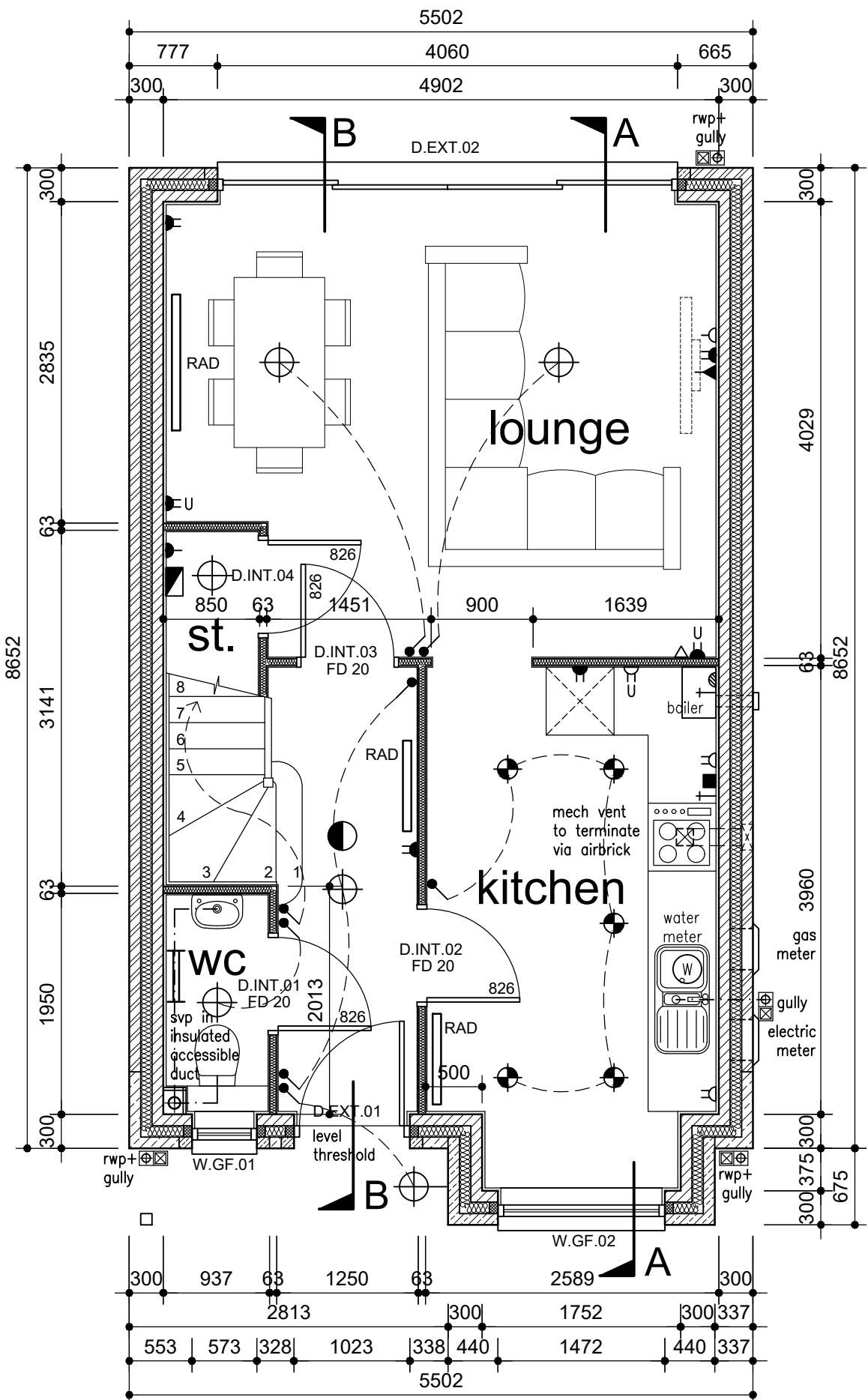
DOOR SCHEDULE			
Reference	Location	Door Leaf	Notes
D.EXT.01	Entrance	4060x2100	Sliding Door
D.EXT.02	Lounge	826	FD20
D.INT.01	WC	826	FD20
D.INT.02	Kitchen	826	FD20
D.INT.03	Lounge	826	FD20
D.INT.04	Store	826	FD20
D.INT.05	Bathroom	726	FD20
D.INT.06	Bed 3	726	FD20
D.INT.07	Store	726	FD20
D.INT.08	Bed 4	726	FD20
D.INT.09	Study	726	FD20
D.INT.10	En-Suite	726	FD20
D.INT.11	Bed 1	626	FD20
D.INT.12	Bed 2	726	FD20

WINDOW SCHEDULE		
Reference	Size (WxH)	Notes
W.GF.01	573x1050	Obscure Glazing
W.GF.02	1472x1850	
W.FF.03	1023x900	Obscure Glazing
W.FF.04	573x1350	
W.FF.05	573x1350	
W.FF.06	1360x1200	
W.FF.07	798x1200	
W.SF.08	780x980	Rooflight
W.SF.09	1135x1350	
W.SF.10	780x980	Rooflight
W.SF.11	780x980	Rooflight

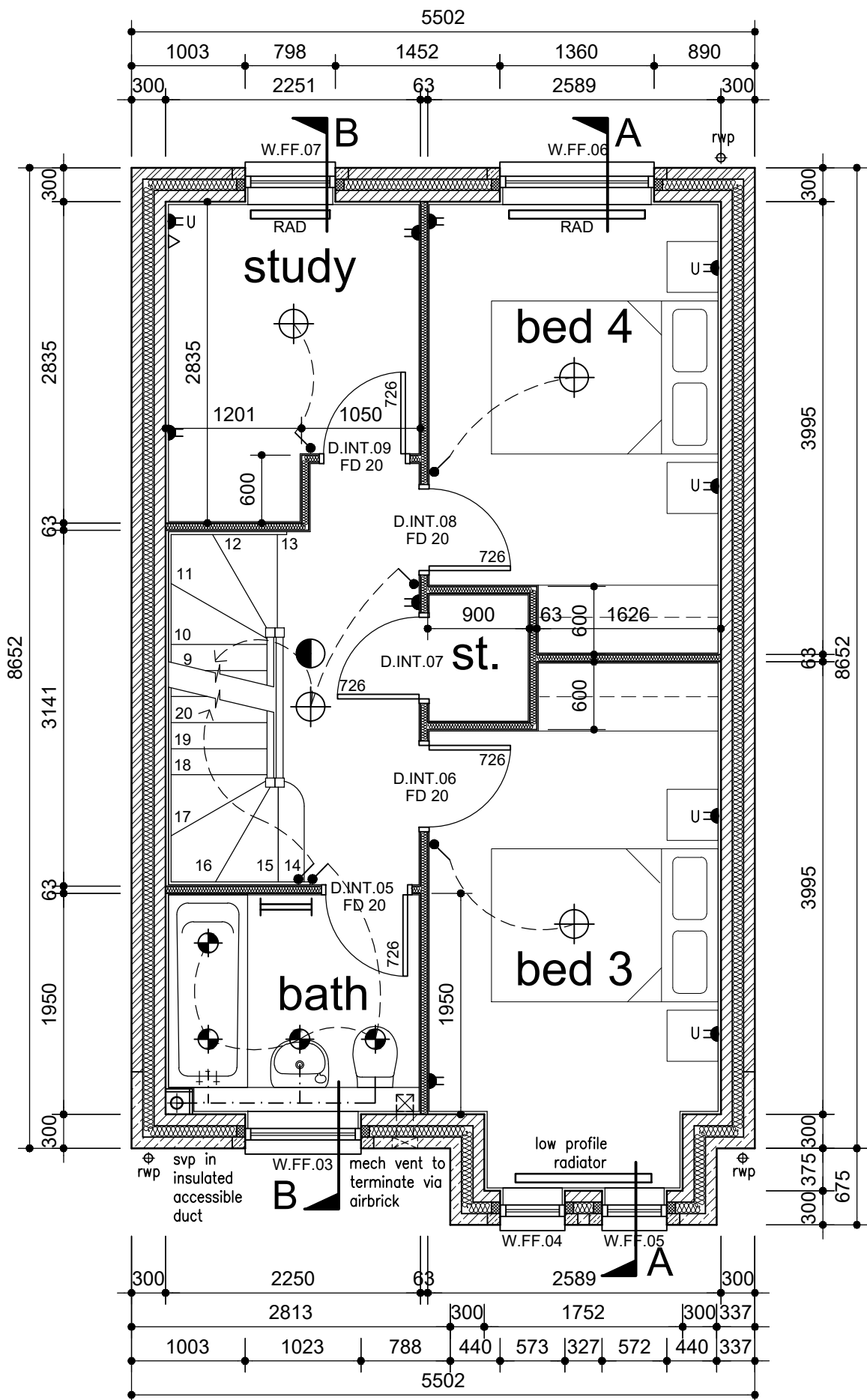
Services Legend	
	low level twin socket outlet
	high level twin socket outlet
	fused spur outlet
	telephone socket
	TV aerial point
	cooker control unit
	gas point
	consumer unit
	light switch
	2-way light switch
	internal low energy light fitting
	external low energy light fitting with PIR and daylight cut off sensor
	downlighter
	mechanical extract fan
	self contained interconnected mains operated smoke/heat detector with battery back up and wired to separate fused circuit at distribution board
	heater position - refer to specialist details
	heated towel rail
	low level twin socket outlet with USB
	CAT5e data point



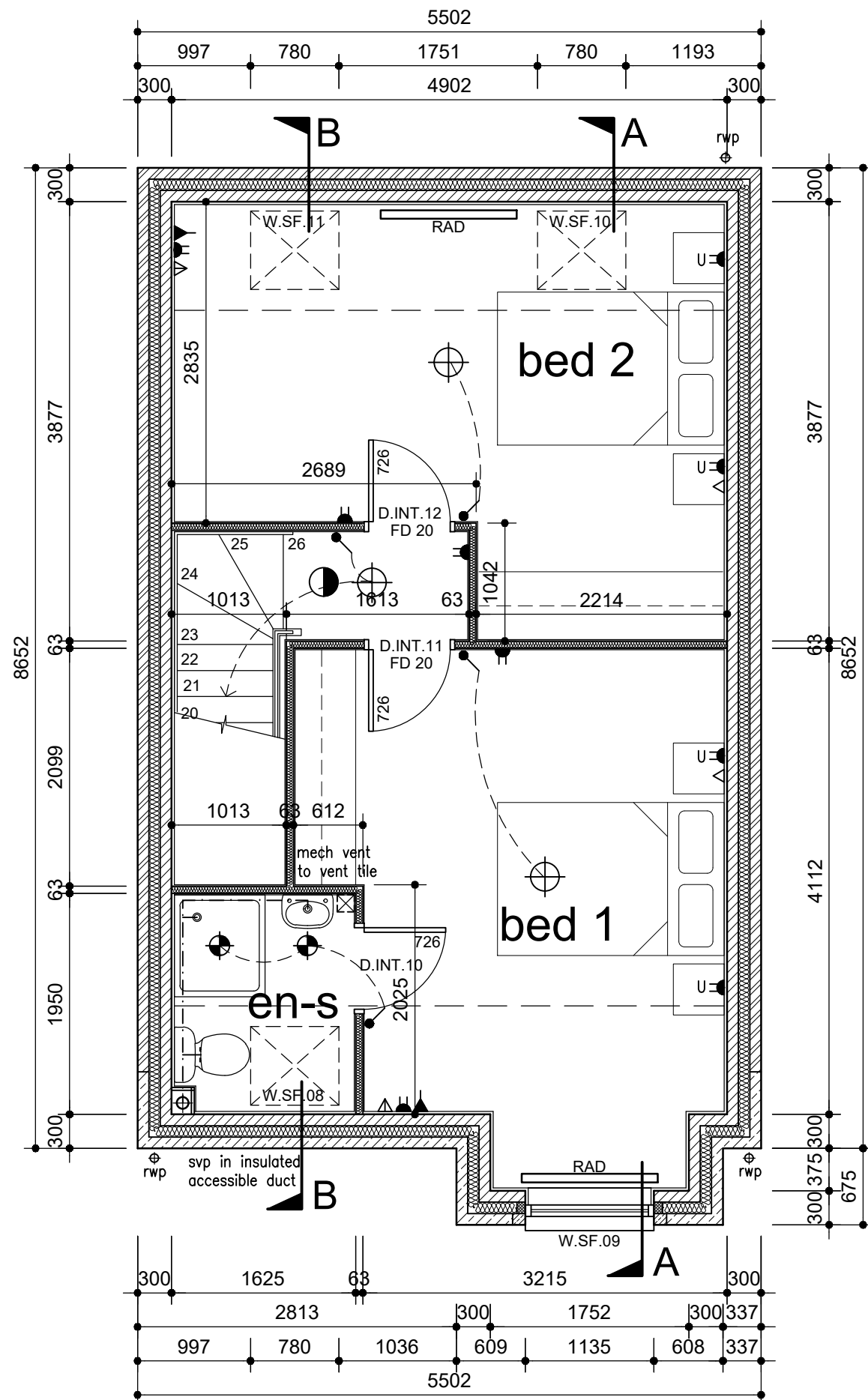
Alternative Kitchen Layout



Ground Floor



First Floor



Second Floor

IMPORTANT	
© This drawing is copyright and remains the property of this practice	
Do not scale this drawing	
All dimensions to be checked on site	
Positions of existing services to be confirmed prior to proceeding	
REVISION STATUS	
S: Information issued for feasibility or scheme design	
T: Information issued for tender purposes only	
C: Information issued for Construction	
NB: Only those drawings containing a C revision to be used for construction	
NOTES	

CLIENT	
AURUM_HOMES_LTD	
PROJECT	
BRADFORD ROAD_BAILIFF_BRIDGE	
BRIGHOUSE	
DRAWING TITLE	
FLOOR_PLANS	
HOUSE_TYPE_1_DETACHED	
SCALE	DATE
1:50_@_A1	JULY_2019
DRAWN	CHECKED
PWL	PWL
DRG NO.	REVISION
EAD_047_WD_05	

Evolve Architectural Design Ltd	
2 St Matthews School House	
Stanhill Lane	
Oswaldtwistle	
Accrington	
Lancashire BB5 4PZ	
T: 01254 469702	
M 07957 592102	
E: paul@evolvead.co.uk	
www.evolvead.co.uk	

