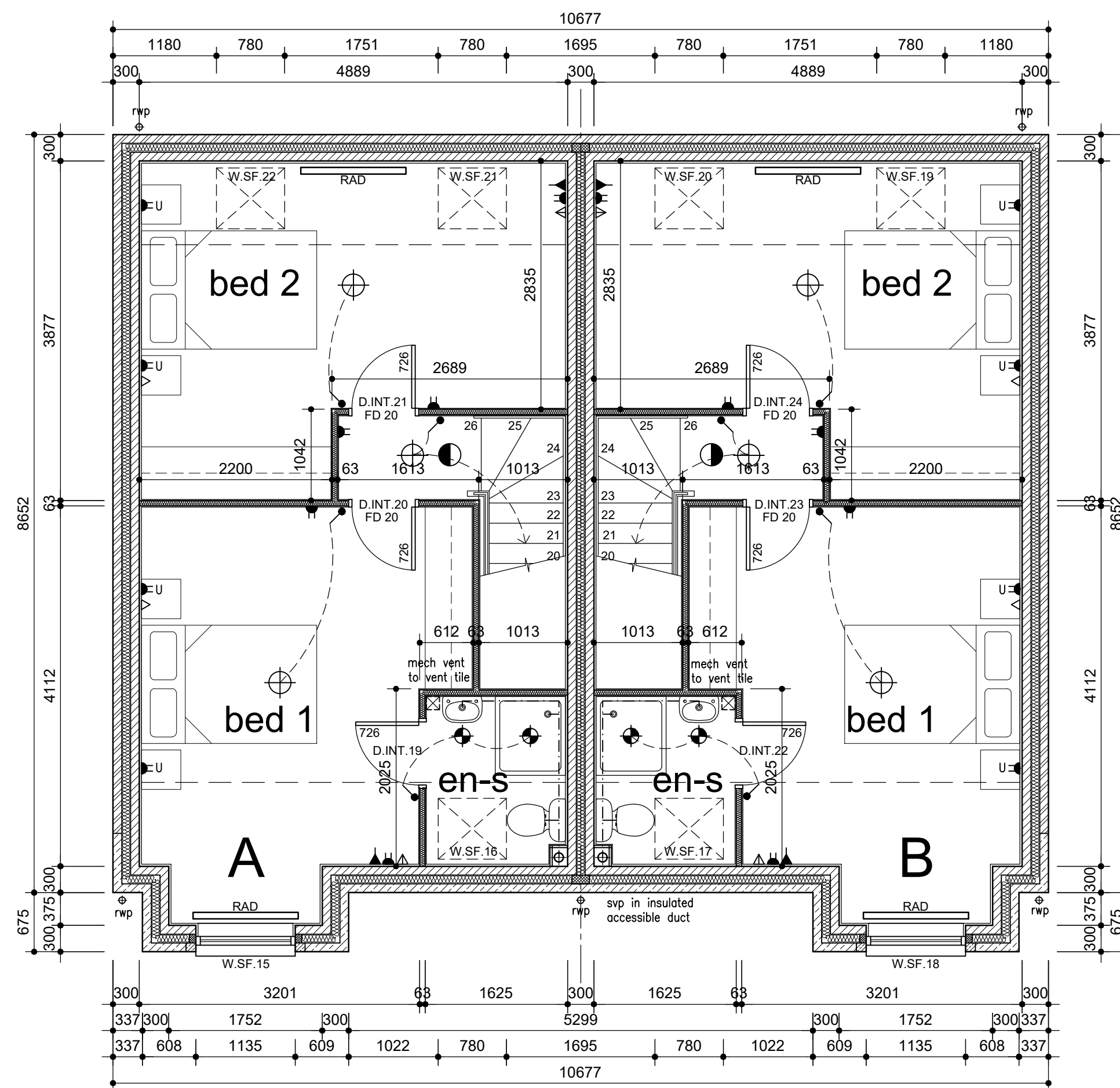


First Floor



Second Floor

IMPORTANT

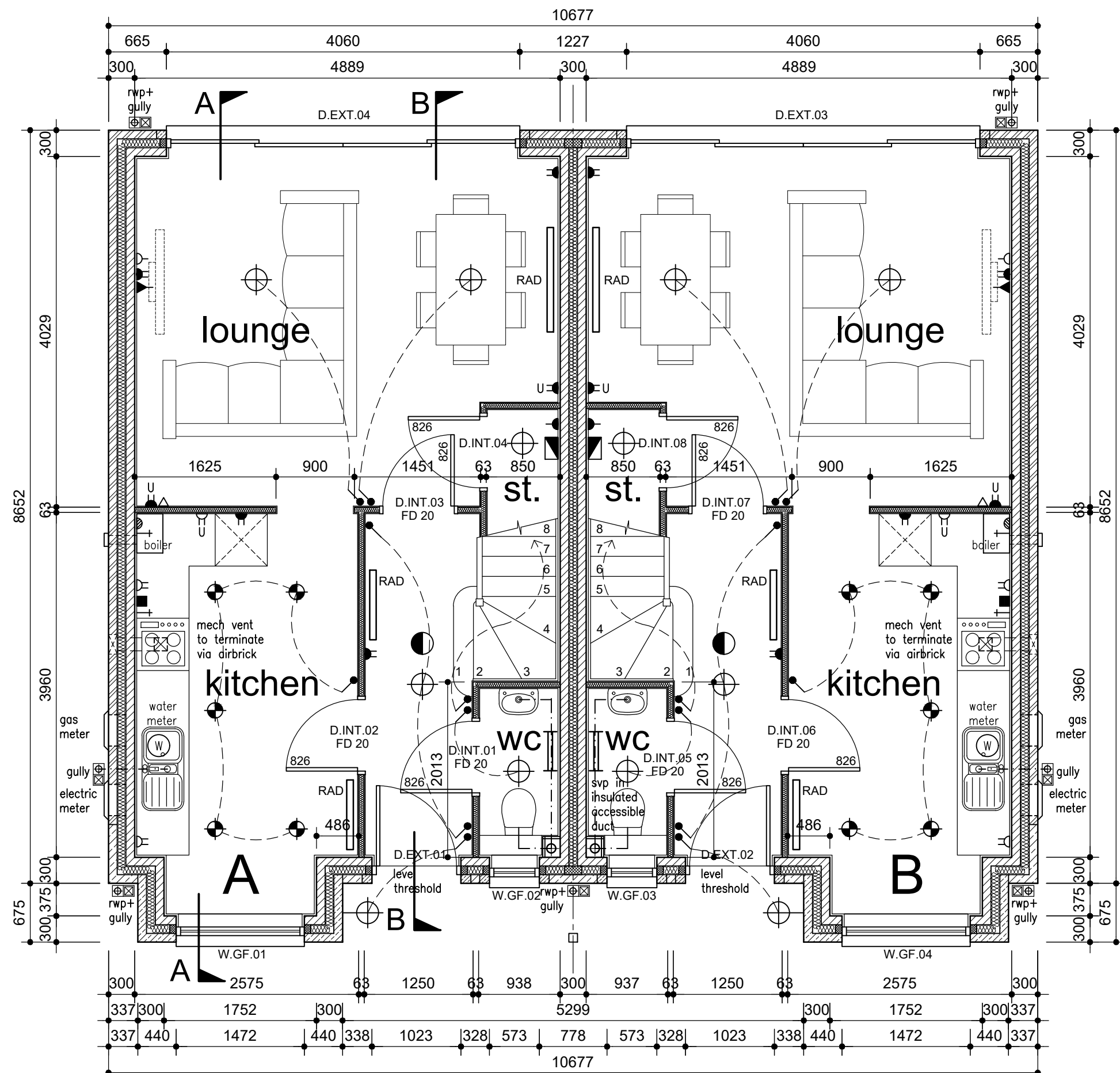
- © This drawing is copyright and remains the property of this practice
- Do not scale this drawing
- All dimensions to be checked on site
- Positions of existing services to be confirmed prior to proceeding

REVISION STATUS

S Information issued for feasibility or scheme design
T Information issued for tender purposes only
C Information issued for Construction
NB: Only those drawings containing a C revision to be used for construction

NOTES

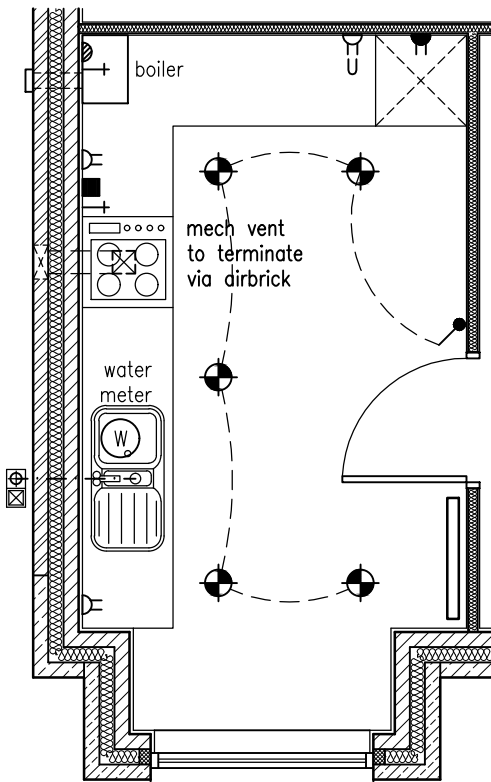
| Services Legend | |
|---|---|
| ▶ low level twin socket outlet | ⊕ internal low energy light fitting |
| ⌋ high level twin socket outlet | ⊕ external low energy light fitting with PIR and daylight cut off sensor |
| ▶ fused spur outlet | ⬇ downlighter |
| ▷ telephone socket | ⬆ mechanical extract fan |
| ▶ TV aerial point | ⬆ self contained interconnected mains operated smoke/heat detector with battery back up and wired to separate fused circuit at distribution board |
| ▶ cooker control unit | ⬆ heater position – refer to specialist details |
| ▶ gas point | ⬆ heated towel rail |
| ▶ consumer unit | ⬆ low level twin socket outlet with USB |
| ▶ light switch | |
| ▶ 2-way light switch | |
| Switches and socket outlets for lighting and other equipment in habitable rooms to be at heights between 450mm and 1200mm from finished floor level | |
| ▶ CAT5e data point | |



Ground Floor

| DOOR SCHEDULE | | | |
|---------------|-----------------|-----------|--------------|
| Reference | Location | Door Leaf | Notes |
| D.EXT.01 | Type A Entrance | | |
| D.EXT.02 | Type B Entrance | | |
| D.EXT.03 | Type B Lounge | 4060x2100 | Sliding Door |
| D.EXT.04 | Type A Lounge | 4060x2100 | Sliding Door |
| D.INT.01 | Type A WC | 826 | FD20 |
| D.INT.02 | Type A Kitchen | 826 | FD20 |
| D.INT.03 | Type A Lounge | 826 | FD20 |
| D.INT.04 | Type A Store | 826 | FD20 |
| D.INT.05 | Type B WC | 826 | FD20 |
| D.INT.06 | Type B Kitchen | 826 | FD20 |
| D.INT.07 | Type B Lounge | 826 | FD20 |
| D.INT.08 | Type B Store | 826 | FD20 |
| D.INT.09 | Type A Bathroom | 726 | FD20 |
| D.INT.10 | Type A Bed 3 | 726 | FD20 |
| D.INT.11 | Type A Store | 726 | FD20 |
| D.INT.12 | Type A Bed 4 | 726 | FD20 |
| D.INT.13 | Type A Study | 726 | FD20 |
| D.INT.14 | Type B Bathroom | 726 | FD20 |
| D.INT.15 | Type B Bed 3 | 726 | FD20 |
| D.INT.16 | Type B Store | 726 | FD20 |
| D.INT.17 | Type B Bed 4 | 726 | FD20 |
| D.INT.18 | Type B Study | 726 | FD20 |
| D.INT.19 | Type A En-Suite | 726 | FD20 |
| D.INT.20 | Type A Bed 1 | 626 | FD20 |
| D.INT.21 | Type A Bed 2 | 726 | FD20 |
| D.INT.22 | Type B En-Suite | 726 | FD20 |
| D.INT.23 | Type B Bed 1 | 726 | FD20 |
| D.INT.24 | Type B Bed 2 | 726 | FD20 |

| WINDOW SCHEDULE | | |
|-----------------|------------|-----------------|
| Reference | Size (WxH) | Notes |
| W.GF.01 | 1472x1650 | |
| W.GF.02 | 573x1050 | Obscure Glazing |
| W.GF.03 | 573x1050 | Obscure Glazing |
| W.GF.04 | 1472x1650 | |
| W.FF.05 | 573x1350 | |
| W.FF.06 | 573x1350 | |
| W.FF.07 | 1023x900 | Obscure Glazing |
| W.FF.08 | 1023x900 | Obscure Glazing |
| W.FF.09 | 573x1350 | |
| W.FF.10 | 573x1350 | |
| W.FF.11 | 1360x1200 | |
| W.FF.12 | 798x1200 | |
| W.FF.13 | 798x1200 | |
| W.FF.14 | 1360x1200 | |
| W.SF.15 | 1135x1350 | |
| W.SF.16 | 780x980 | Rooflight |
| W.SF.17 | 780x980 | Rooflight |
| W.SF.18 | 1135x1350 | |
| W.SF.19 | 780x980 | Rooflight |
| W.SF.20 | 780x980 | Rooflight |
| W.SF.21 | 780x980 | Rooflight |
| W.SF.22 | 780x980 | Rooflight |



Alternative Kitchen Layout

CLIENT
AURUM_HOMES_LTD

PROJECT
BRADFORD_ROAD_BAILIFF_BRIDGE
BRIGHOUSE

DRAWING TITLE
FLOOR_PLANS
HOUSE_TYPE_1_SEMI_DETACHED

SCALE
1:50 @_A1

DATE
JULY_2019

DRAWN
PWL

CHECKED
PWL

DRG NO.
EAD_047_WD_01

REVISION

Evolve Architectural Design Ltd
2 St Matthews School House
Stanhill Lane
Oswaldtwistle
Accrington
Lancashire BB5 4PZ
T 01254 469702
M 07957 592102
E paul@evolvead.co.uk
www.evolvead.co.uk

Evolve
Architectural Design